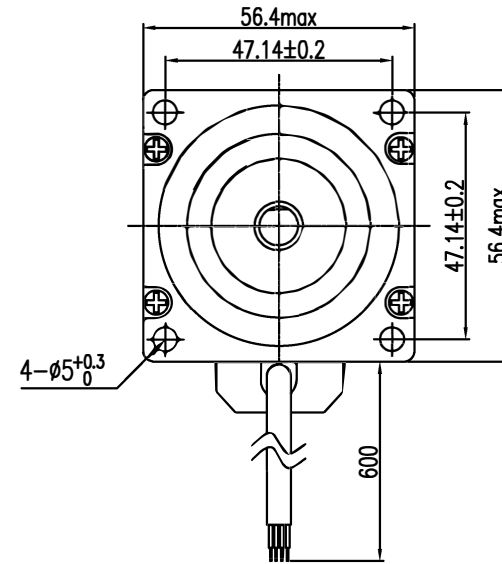
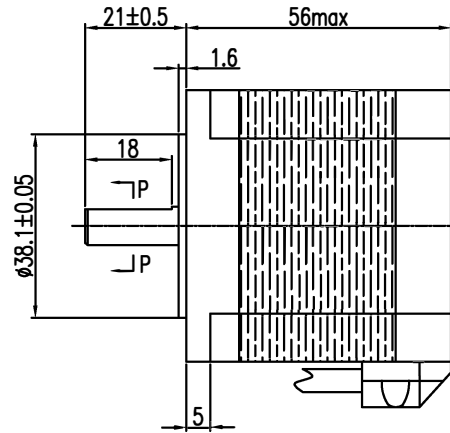
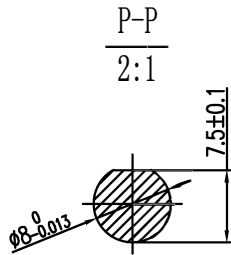


□ Dimension unit=mm

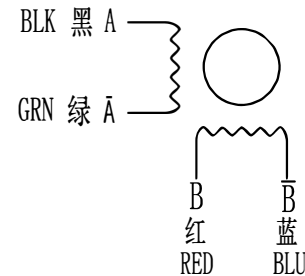


□ SPECIFICATIONS

步距角	/STEP ANGLE	1.8° ±5%
相数	/NO. OF PHASES	2
额定电压	/RATED VOLTAGE	7.04 V
额定电流	/RATED CURRENT	2.2 A
电阻	/RESISTANCE	3.2 Ω ±10%
电感	/INDUCTANCE	5.4 mH ±20%
静转矩	/HOLDING TORQUE	120 N. cm
绝缘等级	/INSULATION CLASS	CLASS B(130° C)
引出线规格	/LEADSTYLE	RVV 0.5mm ² 电缆线

备注/NOTE:

接线图 / WIRING DIAGRAM



励磁顺序 (2相励磁)
EXCITING SEQUENCE (2EX)

	STEP	A	B	\bar{A}	\bar{B}	CCW
↓ C W	1	+	+	-	-	↑
	2	-	+	+	-	
	3	-	-	+	+	
	4	+	-	-	+	

客户确认&接受 CONFIRMED/ACCEPTED BY CUSTOMER				型号/MODEL:				
盖章&签名 (COMPANY CHOP/SIGNATURE)				SL57S256A302B-0821				
A	NO. A	19/05/06	无	CXZ	备注 NOTE		REV A	
一般公差 TOLERANCE		±0.3/±0.3*	版本 REV	变更内容 ECO NO.	年月日 DATE	变更内容 REVISIONS	设计 BY	
制图/DRAWN	陈锡泽		比例 SCALE	1:1	品名 TITLE	SHENLI®		
设计/DESIGNED			单位 UNIT	mm	深圳市申力微特电机有限公司 SHENZHEN SHENLI WITT MOTOR CO., LTD		三视图 THIRD ANGLE PROJECTION	
审核/CHECKED							□	
承认/APPROVED							□	
							页 SHEET	1/1